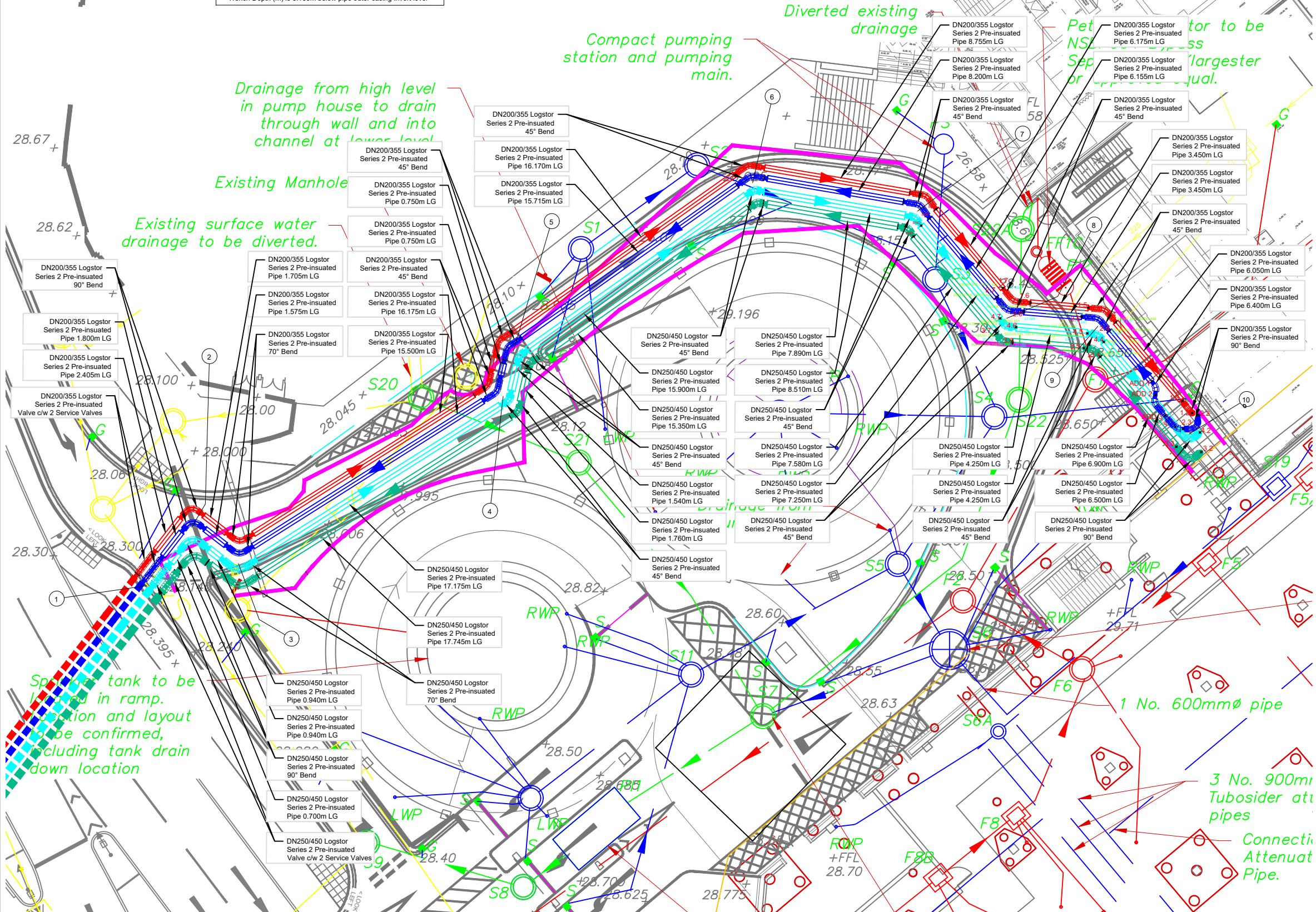




DH & DC TRENCH CENTRE-LINE CO-ORDINATES			
CO-ORD REF	EASTING	NORTHING	TRENCH DEPTH (m)
1	500283.608	158766.222	(NOTE 11)
2	500286.299	158769.702	(NOTE 11)
3	500289.083	158767.549	(NOTE 11)
4	500304.829	158777.497	(NOTE 11)
5	500305.431	158780.175	(NOTE 11)
6	500319.664	158790.196	(NOTE 11)
7	500329.478	158788.515	(NOTE 11)
8	500334.775	158782.126	(NOTE 11)
9	500340.204	158781.663	(NOTE 11)
10	500345.617	158775.240	(NOTE 11)

Trench Depth (m) is 0.100m below pipe outer casing invert level



- Legend:**
- - DH FLOW
  - - DH RETURN
  - - DC FLOW
  - - DC RETURN
  - - TRENCH BOUNDARY (BY OTHERS - SEE NOTE 10)
  - - - - DH FLOW (BY OTHERS)
  - - - - DH RETURN (BY OTHERS)
  - - - - DC FLOW (BY OTHERS)
  - - - - DC RETURN (BY OTHERS)

- Reference Drawings:**
- Notes:**
- All dimensions are in meters (m) unless otherwise stated.
  - All coordinates provided for the purpose of this work are based upon Ordnance Survey coordinates.
  - All levels are in metres (m) above Ordnance Datum.
  - Do not scale from this drawing. If in doubt, ask.
  - Assumptions made on site by contractors or sub-contractors are done so at their own risk.
  - This drawing should be read in combination with the Desktop study, GPR survey, phase layout drawing and the phase drawings linked to this one (continuation drawings).
  - Contractor to work around new and existing services. Any existing services/structures information that has been overlaid onto this drawing is for information purposes only and cannot be relied upon due to possible inaccuracies between background files, ground conditions, latest physical changes on site, etc. Prior to any work it is the contractor's responsibility to ensure they have checked and verified the information along with working in accordance to industry standards, such as, but not limited to HSG 47 'Avoiding danger from Underground Services', etc.
  - It is the contractor's responsibility to liaise with the utility companies in relation to working near/adjacent to their assets and seek any such approvals.
  - DH pipe and fittings to be Logstor Pre-insulated Series 2.
  - Trench boundary has been added as per 'As built Survey Drainage plan GA-C-20-XX-004-P07 (1) 2020.07.23', received from Sir Robert McAlpine Building Services Manager, dated 23/07/2020.
  - Trench depth to be confirmed.

Wc	Fastig	Northing	Elevation
1.7	500334.555	158783.973	27.588
2.7	500334.198	158783.4	27.573
4.7	500334.305	158782.124	27.58
3.7	500334.170	158782.238	27.57
1.6	500335.183	158783.1149	27.591
2.6	500335.805	158782.521	27.588
4.6	500335.339	158782.505	27.590
3.6	500335.126	158780.709	27.58
1.5	500339.813	158782.749	27.58
2.5	500339.246	158782.222	27.581
4.5	500339.573	158782.235	27.605
3.5	500339.366	158780.335	27.575
1.4	500341.268	158782.888	27.517
2.4	500340.883	158782.378	27.654
4.4	500340.557	158780.725	27.678
3.4	500340.317	158779.817	27.616
1.3	500343.211	158777.704	27.66
2.3	500345.201	158775.551	28.003
4.3	500344.815	158775.675	27.656
3.3	500344.867	158774.041	27.673
1.2	500345.807	158775.485	28.588
2.2	500345.169	158775.357	28.576
4.2	500346.275	158775.337	28.974
3.2	500346.35	158774.173	27.567
Art. 1	500343.419	158778.389	27.66
Art. 2	500343.619	158775.57	27.876
Art. 3	500344.206	158776.336	27.997



**TITLE**  
 WOKING DISTRICT ENERGY NETWORK  
 GENERAL ARRANGEMENT DH & DC PIPES  
 FLOW & RETURN - SHT 1 AS BUILT

**PROJECT / CLIENT**  
 WOKING

**SITE NAME**  
 N/A

**STATUS**  
 FOR INFORMATION

**CUSTOMER DRAWING NUMBER**  
 N/A

**DRAWING NUMBER**  
 3885-MUS-STO-U1-GA-0001

**SCALE**  
 1:250

**SIZE**  
 A3

**REV**  
 A2

Rev	Date	App	Chkd	W	PG
P1	03/08/2020			CH	WS

FOR INFORMATION

FIRST FLOOR  
 UNIT 2 SWANWICK COURT  
 ALFRETON  
 DERBYSHIRE  
 DE55 7AS

www.morrisonus.com