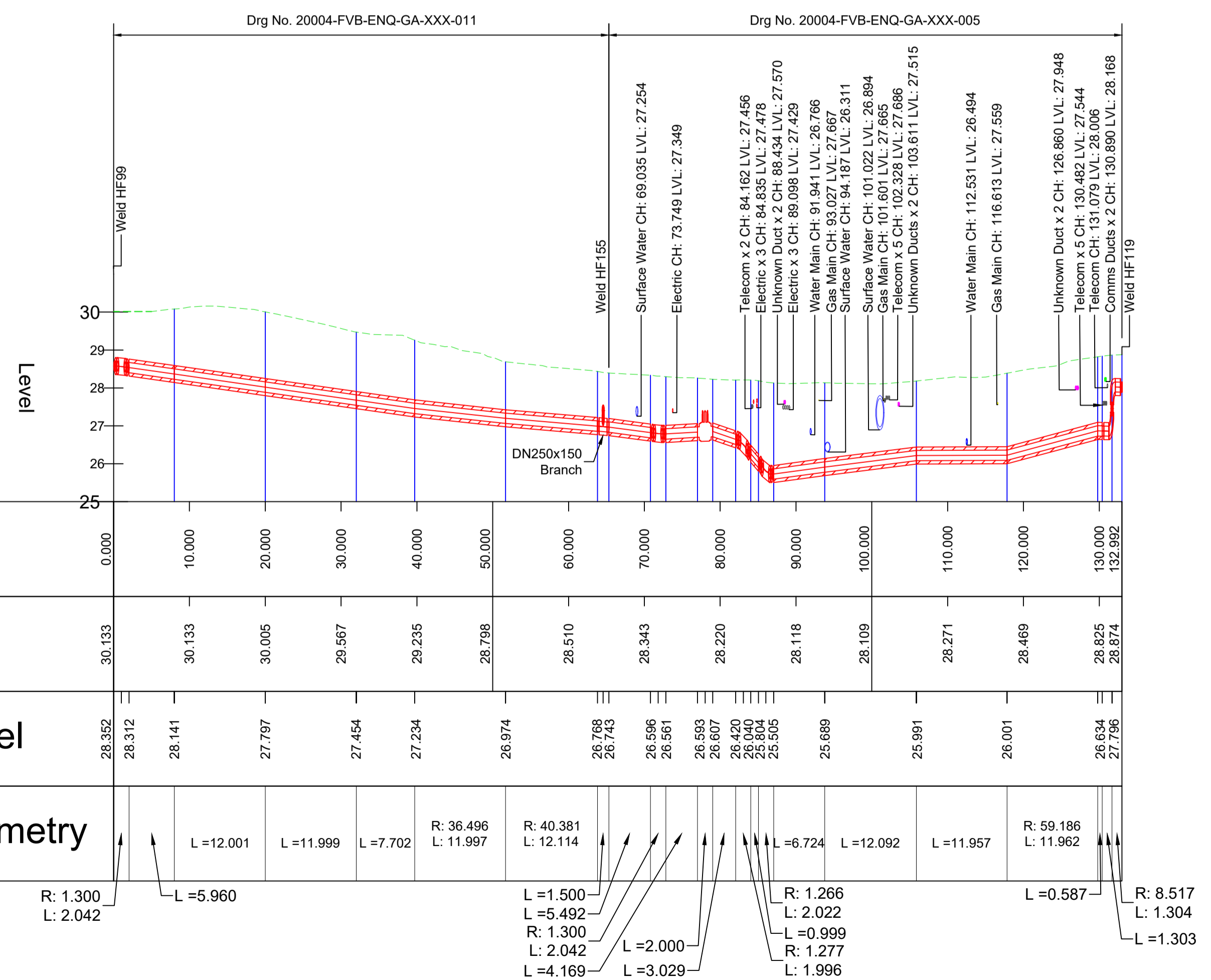


DH FLOW DN250 (OD 450) SERIES 2 - LONGITUDINAL SECTION - SCALE: H 1:500,V 1:100. DATUM: 25



DH Flow			
Weld Number	Easting	Northing	Crown of Pipe
HF 155	500236.245	158696.574	27.205
HF 157	500236.299	158695.591	27.569
HF 129	500235.346	158694.661	27.563
HF End of pipe	500234.833	158694.132	27.552
HF 159&161	500237.345	158695.460	27.218
HF111	500246.722	158687.863	27.424
HF109	500255.893	158680.212	27.684
HF107	500260.920	158674.377	27.904
HF105	500268.682	158665.226	28.247
HF103	500276.444	158656.074	28.591
HF101	500280.401	158651.410	28.766
HF99	500280.241	158649.777	28.834

DH Return			
Weld Number	Easting	Northing	Crown of Pipe
HR 156	500237.034	158696.772	27.149
HR 158	500237.036	158695.680	27.531
HR 160	500236.607	158695.283	27.532
HR 132	500235.687	158694.303	27.549
HR End of pipe	500235.223	158693.827	27.551
HR 162	500238.100	158695.759	27.177
HR112	500247.392	158688.179	27.425
HR110	500256.460	158680.426	27.676
HR108	500261.598	158674.556	27.928
HR106	500269.359	158665.404	28.198
HR104	500277.121	158656.253	28.463
HR102	500281.147	158651.505	28.608
HR98 & 100	500280.994	158649.679	28.701

Legend:
— DH FLOW
— DH RETURN
— Comms Route
— HV Route

REV	NOTE	DESCRIPTION	DATE	APPR.
09	AS BUILT	- ENETEC FINAL COMMENTS	2021-02-10	C.H.
08	AS-BUILT	- Chambers, Comms & HV Route Updated	2021-01-20	C.H.
07	AS BUILT	- Comms & HV Ducts Added	2020-11-12	C.H.
06	AS BUILT	- Chambers Added	2020-10-08	C.H.
05	AS BUILT		2020-10-06	C.H.
04	AS BUILT		2020-10-01	C.H.
03	DESIGN UPDATE		2020-05-25	S.B.
02	DESIGN UPDATE		2020-04-06	S.B.

AS-BUILT

CLIENT: **Genetec SERVICES LTD**

FVB District Energy UK Ltd
 9 Grayfriars Road, Reading RG1 1NU
 United Kingdom
 Company Number: 10114933
 www.fvb.se/en

PROJECT NO 200004	DRAWN BY S.BORSI	DESIGNED BY S.BORSI
DATE 2020-03-15	APPROVED BY PETER RUSSETT	

DISTRICT HEATING LAYOUT & PROFILES - PHASE 1 WORKS

SCALE: A1=1:100, A3=1:200 | DRAWING NO: 200004-FVB-ENQ-GA-XXX-11 | REV: 09