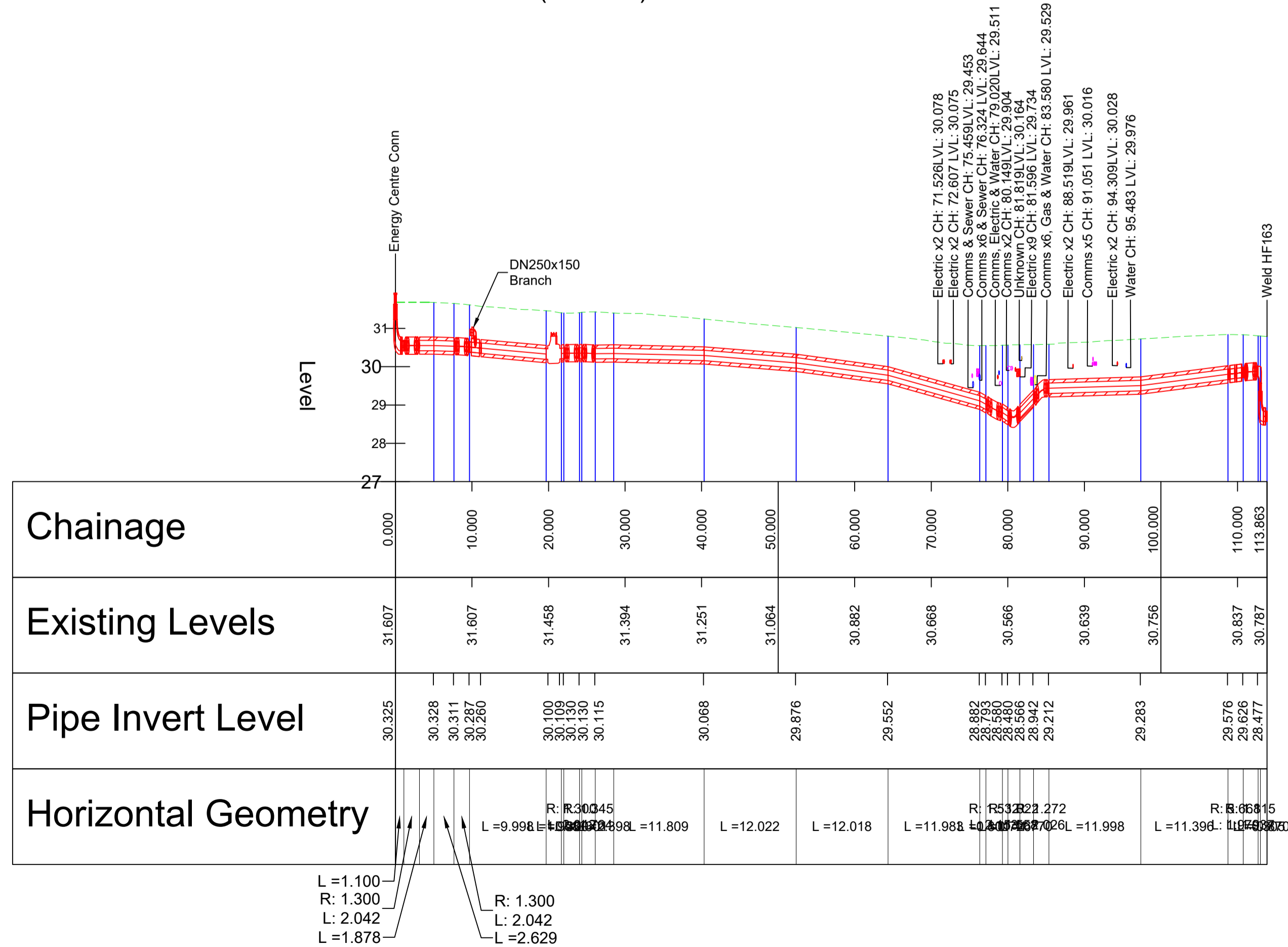


PHASE 1 POOLE ROAD DH FLOW DN250 (OD 450) SERIES 2 - LONGITUDINAL SECTION - SCALE: H 1:500,V 1:100. DATUM: 27.000



DH Flow				DH Return			
Weld Number	Easting	Northing	Crown of Pipe	Weld Number	Easting	Northing	Crown of Pipe
HF 163	500195.547	158565.638	28.930	HR 164	500196.117	158565.892	28.933
HF 165	500196.129	158564.971	29.553	HR 166	500196.670	158565.248	29.514
HF 167	500196.499	158564.603	30.173	HR 168	500196.990	158564.863	30.133
HF 169	500196.120	158563.005	30.107	HR 170	500197.086	158564.761	30.135
HF 173	500194.381	158562.282	30.026	HR 172	500196.992	158562.914	30.127
HF 175	500183.334	158559.484	29.733	HR 176	500194.748	158561.740	30.055
HF 177	500171.659	158556.620	29.630	HR 178	500184.400	158559.094	29.725
HF 179	500170.738	158555.037	29.392	HR 180	500172.402	158556.186	29.566
HF 181	500171.141	158553.386	29.040	HR 182	500171.475	158554.592	29.273
HF 183	500170.495	158552.078	28.930	HR 184	500171.875	158553.051	28.912
HF 185	500169.772	158551.795	29.032	HR 186	500171.077	158551.635	28.869
HF 187	500168.622	158550.266	29.243	HR 188	500170.897	158551.588	28.899
HF 189	500168.672	158549.467	29.322	HR 190	500170.416	158551.430	28.995
HF 171	500169.763	158537.534	30.002	HR 192	500169.255	158549.872	29.277
HF205	500173.218	158499.443	30.565	HR 174	500170.325	158537.972	30.031
HF207&209	500171.901	158498.286	30.531	HR206	500173.904	158499.279	30.526
HF211	500170.535	158496.911	30.555	HR208&210	500172.410	158497.757	30.567
HF213	500170.590	158496.385	30.559	HR212	500171.171	158496.419	30.579
HF215	500170.727	158494.879	30.570	HR214	500171.319	158494.901	30.589
HF217	500171.436	158486.112	30.710	HR216	500171.964	158486.707	30.687
HF219	500171.526	158484.625	30.706	HR218	500172.093	158485.221	30.688
HF221	500172.869	158483.410	30.753	HR220	500173.448	158484.011	30.709
HF223	500175.574	158483.589	30.778	HR222	500175.986	158484.207	30.725
HF239	500177.448	158483.715	30.776	HR238	500178.911	158484.362	30.720
HF241	500178.843	158482.525	30.769	HR240	500180.319	158483.145	30.706
HF243	500178.922	158481.418	31.986	HR240A	500180.339	158482.831	30.704
HF225	500171.177	158484.590	31.010	HR242	500180.487	158481.644	31.933
HF227	500171.549	158479.251	31.134	HR224	500171.760	158485.185	30.966
HF229	500172.580	158478.328	31.020	HR224A	500171.939	158482.387	31.026
HF231	500173.196	158478.362	30.940	HR224B	500172.086	158480.007	31.064
HF233	500174.223	158477.431	30.794	HR226	500172.092	158479.904	31.060
HF235	500174.391	158474.244	30.824	HR226A	500172.094	158479.831	31.060
HF237 END	500174.461	158472.023	30.859	HR228	500173.111	158478.901	30.991
HF115	500170.852	158525.565	30.326	HR230	500173.629	158478.922	30.943
HF117	500171.967	158513.595	30.518	HR232	500174.538	158477.987	30.850
HF119	500173.035	158501.834	30.571	HR234	500174.804	158474.301	30.839
				HR236 END	500174.965	158472.097	30.850
				HR 116	500171.417	158526.011	30.328
				HR118	500172.593	158514.054	30.543
				HR120	500173.646	158502.127	30.605

DISTRICT HEATING AND COOLING

NOTES

- All dimensions are in mm, unless otherwise stated.
- Contractors to take safety measures to avoid any damages to existing or other services.
- Design parameters are detailed within the Woking DHCN Project Green Stress Calculation Report, Doc Ref. 200004-FVB-ENG-STR-XXX-002.
- Installed pipework is Power-Pipe Series 2, conforming to the following detailed specifications:
- Norms and Standards  
Fundamental for Power-Pipe's operations are the European Standards for preinsulated pipes and fittings. These are:  
District heating systems - Prefabricated buried pipes with solid bond between the insulation and the service pipe for the distribution of hot water.  
EN253:2009  
Fitting assemblies of straight steel service pipes, polyurethane thermal insulation (PUR) and outer casing of polyethylene (PE).  
EN448:2009  
Fitting assemblies of steel service pipes, polyurethane thermal insulation (PUR) and outer casing of polyethylene (PE).  
EN488:2009  
Steel valve assembly for steel service pipes, polyurethane thermal insulation (PUR) and outer casing of polyethylene (PE).  
EN489:2009  
Joint assembly for steel service pipes, polyurethane thermal insulation (PUR) and outer casing of polyethylene (PE).  
EN1394:2009  
District heating system - Design and installation of preinsulated bonded pipe systems for district heating with impact proof insulation between service pipe and outer casing.  
EN1449:2009  
District heating system - Preinsulated bonded pipe systems for directly buried hot water networks - Surveillance systems.  
EN15698-1:2009  
District heating system - Preinsulated bonded twin pipe systems for directly buried hot water networks. Twin pipe assembly of steel service pipe, polyurethane thermal insulation (PUR) and outer casing of polyethylene (PE).
- CHAMBERS  
For chamber information and co-ordinates refer to Document P147 Thameway Woking (Project Green) - Chamber Schedule

- Legend:
- DH FLOW
  - DH RETURN
  - Comms Route
  - HV Route

REV	NOTE	DESCRIPTION	DATE	APPR.
16	AS-BUILT - ENETEC FINAL COMMENTS		2021-02-21	C.H.
15	AS-BUILT - Chambers, Comms & HV Route Updated		2021-01-20	C.H.
14	AS-BUILT - Pooler Rd Info Added		2020-12-14	C.H.
13	AS-BUILT - Weld Numbers Updated		2020-11-17	C.H.
12	AS-BUILT		2020-11-12	C.H.
11	DESIGN UPDATE		2020-09-30	S.B.
10	NEW ROUTE		2020-09-28	S.B.
09	NEW ROUTE		2020-09-24	S.B.
08	NEW ROUTE		2020-09-22	S.B.
07	CONNECTION GAS HV COMMS DH		2020-08-31	S.B.
05	DESIGN UPDATE GAS		2020-08-17	S.B.
04	DESIGN UPDATE		2020-08-07	S.B.
03	DESIGN UPDATE		2020-07-31	S.B.
02	DESIGN UPDATE		2020-07-01	S.B.
01	DESIGN UPDATE		2020-06-12	S.B.

AS-BUILT

CLIENT: **Genetec SERVICES LTD**

**FVB** District Energy UK Ltd  
9 Grayfriars Road, Reading RG1 1NU United Kingdom  
Company Number 10114933 www.fvb.se/en

PROJECT NO: 200004  
DATE: 2020-03-15  
DRAWN BY: S.BORSI  
APPROVED BY: PETER RUSSETT  
DESIGNED BY: S.BORSI

DISTRICT HEATING LAYOUT & PROFILES - PHASE 1 WORKS

SCALE: A1=1:200 A3=1:400  
DRAWING NO: 200004-FVB-ENG-GA-XXX-08  
REV: 16