

CHURCH ST DH FLOW DN 250 (OD 450) SERIES 2 - LONGITUDINAL SECTION - SCALE: H 1:500, V 1:100. DATUM: 26.000

Weld Number	Easting	Northing	Crown of pipe
HF end of pipe 1	500195.6	158565.7	28.93
HF33 /1	500193.4	158568.1	28.884
HF91 /2	500192.6	158569.1	29.156
HF28 /3	500193	158570.5	29.804
HF 89 /4	500195.2	158572.7	29.778
HF 27	500196.3	158573.7	29.737
HF 29	500205.1	158581.8	29.513
HF 31	500213.9	158590	29.232
HF 33	500218.3	158593.9	29.108
HF35	500219.2	158594.1	29.415
HF37	500218.9	158594.4	29.763
HF End of Pipe 2	500218.5	158594.8	29.704

HF 39	500219.4	158594.9	29.123
HF 40	500220.1	158595.5	29.112
HF43	500221.3	158596.6	29.085
HF47	500222.9	158598.2	29.072
HF49	500223.6	158599.1	29.07
HF51	500225.4	158600.9	29.361
HF53	500227.3	158602.7	29.687
HF55	500236.3	158610.6	29.79
HF57	500245.3	158618.6	29.655
HF59	500251.8	158624.3	29.588
HF61	500251.9	158624.6	29.561
HF63	500252	158626.3	29.532
HF65	500252.2	158626.5	29.526
HF67	500255.6	158629.4	29.533
HF69	500255.9	158629.5	29.523
HF71	500257.4	158629.4	29.568
HF73	500257.7	158629.5	29.577
HF75	500261.2	158632.6	29.541
HF77	500270.2	158640.6	29.466
HF79	500271.6	158640.3	29.796
HF79a	500271.7	158640.2	29.797
HF81	500272.7	158639	29.813
HF83 End of pipe 3	500273	158638.7	29.813

HF85	500271.3	158641.7	29.463
HF End of pipe 4	500280.2	158649.7	28.835
Weld Number	Easting	Northing	Crown of pipe
HR end of pipe 1	500196.1	158565.9	28.934
HR33 /1	500194.3	158568.1	28.903
HR94 /2	500193.4	158569.1	29.15
HR27 /3	500193.8	158570.5	29.798
HR90 /4	500195.6	158572.2	29.808

HR 28	500196.6	158573.2	29.78
HR 30	500205.4	158581.4	29.525
HR 32	500214.3	158589.6	29.239
HR 34	500218.4	158593.3	29.125
HR36	500218.8	158594	29.426
HR38	500218.5	158594.3	29.719
HR End of Pipe 2	500218.1	158594.8	29.681
HR 42	500219.5	158594.3	29.144
HR 41	500220.5	158595.2	29.118
HR44	500221.6	158596.2	29.084
HR46	500223.8	158598.2	29.198
HR48	500226.5	158600.7	29.579
HR50	500228.7	158602.7	29.735
HR52	500237.5	158610.9	29.787
HR54	500246.4	158618.9	29.64
HR56	500252.2	158624	29.628
HR58	500252.3	158624.1	29.628
HR60	500252.5	158624.4	29.624
HR62	500252.5	158626.1	29.636
HR64	500252.7	158626.4	29.637
HR66	500255.6	158628.7	29.542
HR68	500255.8	158628.8	-67.977
HR70	500257.4	158628.6	29.602
HR72	500257.7	158628.7	29.601
HR74	500262.1	158632.5	29.562
HR76	500271	158640.6	29.478

DISTRICT HEATING AND COOLING

NOTES

All dimensions are in mm, unless otherwise stated.

Contractors to take safety measures to avoid any damages to existing or other services.

Design parameters are detailed within the Woking DHCN Project Green Stress Calculation Report, Doc Ref. 200004-FVB-ENQ-STR-XXX-002.

Installed pipework is Power-Pipe Series 2, conforming to the following detailed specifications:

Norms and Standards Fundamental for Power-Pipe's operations are the European Standards for preinsulated pipes and fittings. These are:

District heating systems - Prefabricated buried pipes with solid bond between the insulation and the service pipe for the distribution of hot water.

EN253:2009 Fitting assemblies of straight steel service pipes, polyurethane thermal insulation (PUR) and outer casing of polyethylene (PE).

EN48:2009 Fitting assemblies of steel service pipes, polyurethane thermal insulation (PUR) and outer casing of polyethylene (PE).

EN488:2009 Steel valve assembly for steel service pipes, polyurethane thermal insulation (PUR) and outer casing of polyethylene (PE).

EN489:2009 Joint assembly for steel service pipes, polyurethane thermal insulation (PUR) and outer casing of polyethylene (PE).

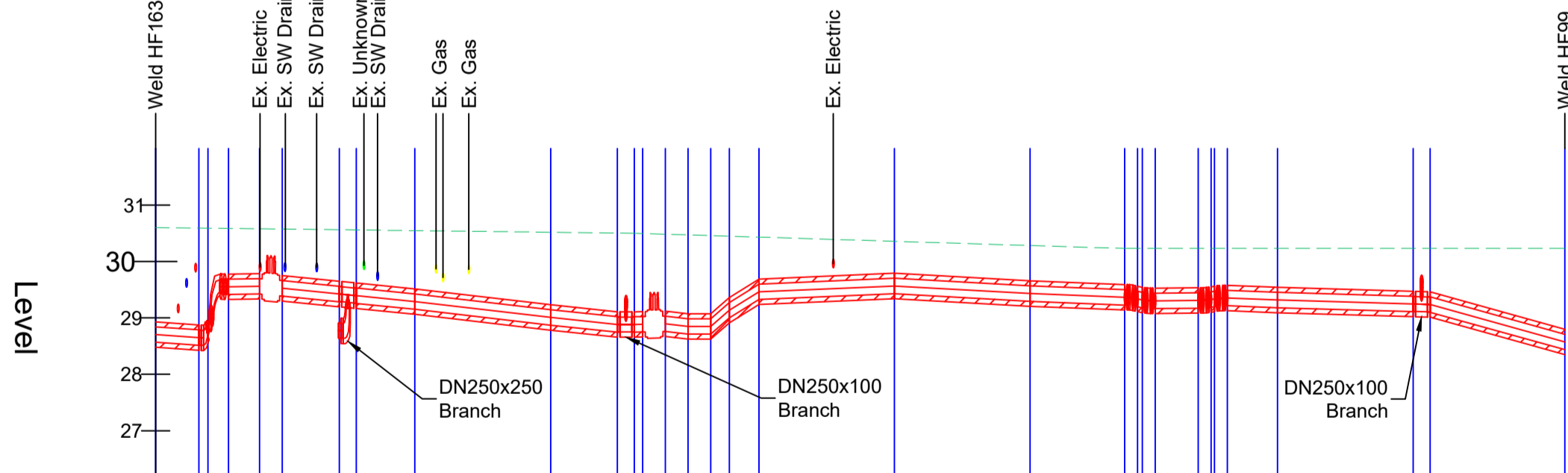
EN1394:2009 District heating system - Design and installation of preinsulated bonded pipe systems for district heating with impact proof insulation between service pipe and outer casing.

EN1449:2009 District heating system - Preinsulated bonded pipe systems for directly buried hot water networks - Surveillance systems.

EN15698-1:2009 District heating system - Preinsulated bonded twin pipe systems for directly buried hot water networks. Twin pipe assembly of steel service pipe, polyurethane thermal insulation (PUR) and outer casing of polyethylene (PE).

CHAMBERS For chamber information and co-ordinates refer to Document P147 Thameway Woking (Project Green) - Chamber Schedule

- Legend:
- DH FLOW
 - DH RETURN
 - Comms Route
 - HV Route



Chainage	Existing Levels	Pipe Invert Level	Horizontal Geometry
0.000	30.600	28.480	
10.000	30.576	28.425	L = 3.817
20.000	30.550	28.334	L = 0.815
30.000	30.528	28.299	R: 0.847
40.000	30.505	28.187	L = 1.808
50.000	30.451	28.063	L = 2.762
60.000	30.390	28.782	L = 12.042
70.000	30.329	28.668	
80.000	30.267	28.670	L = 11.995
90.000	30.230	28.622	L = 2.633
100.000	30.290	28.611	L = 1.656
110.000	30.230	28.509	R: 1.451
120.000	30.230	28.449	L: 1.137
124.881	30.230	28.349	L = 1.500

Weld Number	Easting	Northing	Crown of Pipe
HF191A End of Pipe	500202.874	158572.274	29.180
HF191	500201.443	158573.834	29.088
HF193	500200.437	158574.921	29.021
HF195	500200.020	158575.403	28.995
HF197	500199.858	158577.026	28.904
HF199	500199.843	158577.000	29.606
HF201	500201.175	158578.231	29.591
HR194A End of Pipe	500203.317	158572.812	29.182
HR194	500201.964	158574.273	29.125
HR196	500200.910	158575.392	29.070
HR198	500200.744	158577.053	28.960
HR200	500200.749	158577.062	29.658
HR202	500202.077	158578.318	29.627
HR204	500199.755	158576.093	29.678

REV	NOTE	DESCRIPTION	DATE	APPR.
09	AS BUILT - ENETQ FINAL COMMENTS		2021-02-10	C.H.
08	AS-BUILT - Chambers, Comms & HV Route Updated		2021-01-20	C.H.
07	AS BUILT - Future Connection, Comms & HV Added		2020-11-12	C.H.
06	AS BUILT - HV & Chambers Added		2020-08-08	C.H.
05	AS BUILT		2020-08-06	C.H.
04	DESIGN UPDATE		2020-06-25	S.B.
03	DESIGN UPDATE		2020-05-25	S.B.
02	DESIGN UPDATE		2020-04-06	S.B.

AS-BUILT

CLIENT **eneteq SERVICES LTD**

FVB District Energy UK Ltd
 9 Grayfriars Road, Reading RG1 1NU
 United Kingdom
 Company Number 10114933
 www.fvb.se/en

PROJECT NO 200004 | DRAWN BY S.BORSI | DESIGNED BY S.BORSI
 DATE 2020-03-15 | APPROVED BY PETER RUSSETT

DISTRICT HEATING LAYOUT & PROFILES - PHASE 1 WORKS

SCALE A1=1:250 A3=1:500 | DRAWING NO 200004-FVB-ENQ-GA-XXX-06 | REV 09