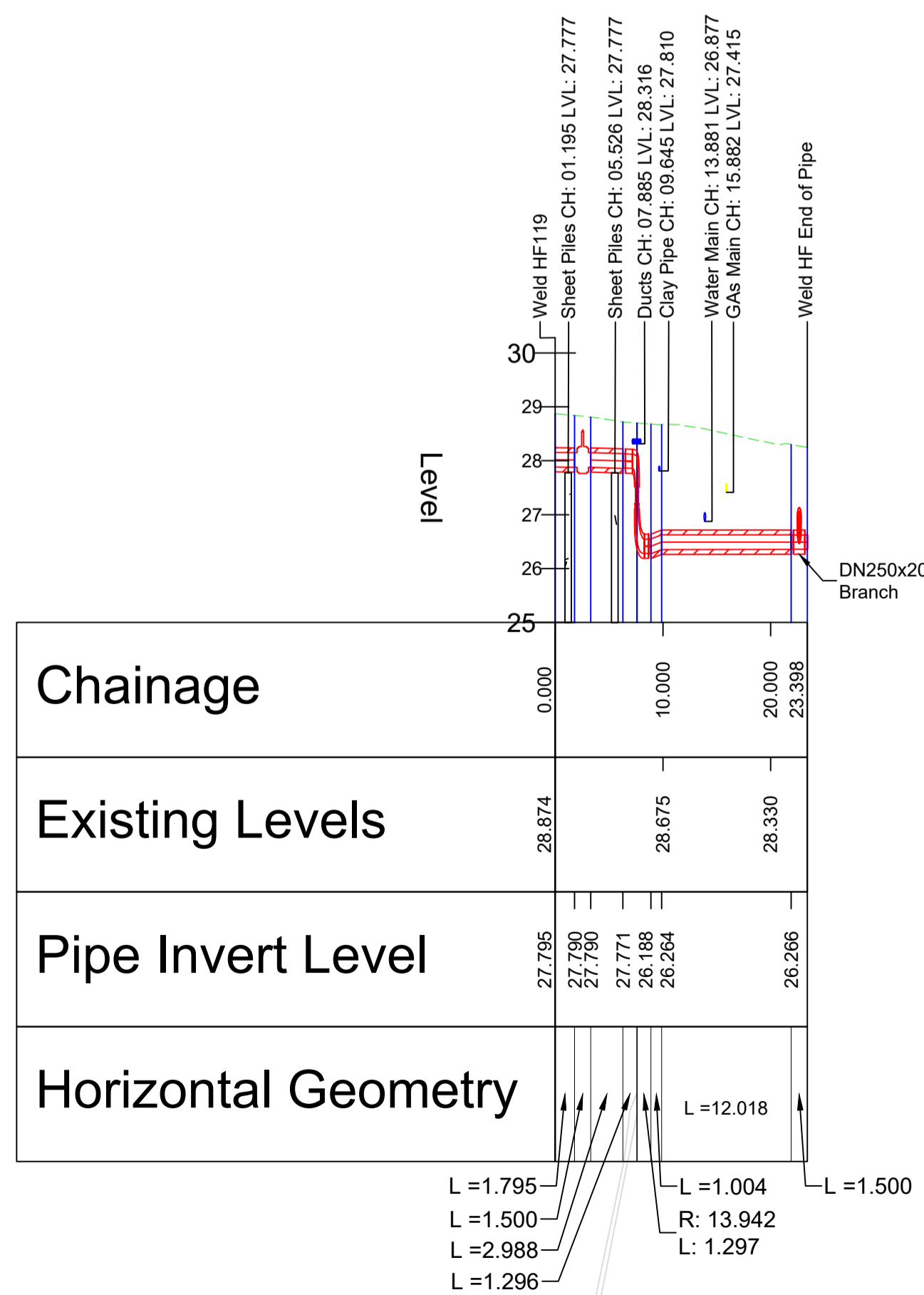


PHASE 1 DH FLOW DN250 (OD 450) SERIES 2 - LONGITUDINAL SECTION - SCALE: H 1:500,V 1:100. DATUM: 25.000



DH Flow				DH Return			
Weld Number	Easting	Northing	Crown of Pipe	Weld Number	Easting	Northing	Crown of Pipe
HF End of Pipe	500282.797	158765.942	26.736	HR End of Pipe	500283.458	158765.806	26.750
HF3	500281.840	158764.735	26.716	HR2	500282.658	158764.769	26.755
HF17	500274.356	158755.327	26.714	HR14	500275.205	158755.346	26.753
HF19	500273.740	158754.551	26.717	HR16	500274.208	158754.099	26.740
HF19A	500273.080	158753.730	27.276	HR18	500273.548	158753.254	27.284
HF21	500272.178	158752.467	28.221	HR20	500272.654	158751.979	28.219
HF25	500270.134	158749.794	28.240	HR24	500270.769	158749.361	28.217
HF23	500269.628	158748.787	28.240	HR22	500270.047	158748.360	28.221
HF27	500268.104	158746.642	28.279	HR26	500268.536	158746.216	28.251
HF13	500281.341	158766.097	27.120	HR10	500282.151	158766.145	27.135
HF15	500280.679	158766.626	27.099	HR12	500281.008	158767.074	27.102
HF5	500279.505	158767.571	27.071	HR6	500279.838	158768.001	27.074
HF End of Pipe	500278.957	158768.006	27.037	HR End of Pipe	500279.220	158768.463	27.043

DC Flow				DC Return			
Weld Number	Easting	Northing	Crown of Pipe	Weld Number	Easting	Northing	Crown of Pipe
CF End of Pipe W	500283.585	158765.193	26.689	CR End of Pipe W	500284.136	158764.935	26.687
CF12W	500282.874	158764.271	26.706	CR11W	500283.564	158764.188	26.689
CF2W	500281.947	158763.090	26.711	CR11AW	500282.698	158763.082	26.691
CF20W	500274.634	158753.585	26.702	CR17W	500275.331	158753.593	26.684
CF20AW	500274.092	158752.946	27.247	CR19W	500274.907	158753.094	26.677
CF22W	500273.358	158751.952	28.083	CR21W	500274.391	158752.452	27.255
CF26W	500270.834	158748.368	28.099	CR23W	500273.692	158751.472	28.124
CF28W	500270.120	158747.349	28.115	CR27W	500271.276	158748.038	28.144
CF30W	500269.043	158745.879	28.141	CR25W	500270.570	158747.052	28.148
CF14W	500281.620	158764.280	27.094	CR29W	500269.490	158745.585	28.164
CF16W	500281.103	158764.693	27.081	CR13W	500282.357	158764.317	27.069
CF4W	500279.904	158765.617	27.057	CR15W	500281.393	158765.065	27.059
CF End of Pipe WW	500279.360	158766.065	27.005	CR3W	500280.178	158766.014	27.065
				CR End of Pipe WW	500279.611	158766.439	27.032

DISTRICT HEATING AND COOLING

NOTES

All dimensions are in mm, unless otherwise stated.

Contractors to take safety measures to avoid any damages to existing or other services.

Design parameters are detailed within the Woking DHCN Project Green Stress Calculation Report, Doc Ref. 200004-FVB-ENG-STR-XXX-002.

Installed pipework is Power-Pipe Series 2, conforming to the following detailed specifications:

Norms and Standards
Fundamental for Power-Pipe's operations are the European Standards for preinsulated pipes and fittings. These are:

District heating systems - Prefabricated buried pipes with solid bond between the insulation and the service pipe for the distribution of hot water.

EN253:2009
Fitting assemblies of straight steel service pipes, polyurethane thermal insulation (PUR) and outer casing of polyethylene (PE).

EN488:2009
Fitting assemblies of steel service pipes, polyurethane thermal insulation (PUR) and outer casing of polyethylene (PE).

EN488:2009
Steel valve assembly for steel service pipes, polyurethane thermal insulation (PUR) and outer casing of polyethylene (PE).

EN489:2009
Joint assembly for steel service pipes, polyurethane thermal insulation (PUR) and outer casing of polyethylene (PE).

EN1394:2009
District heating system - Design and installation of preinsulated bonded pipe systems for district heating with impact proof insulation between service pipe and outer casing.

EN144:2009
District heating system - Preinsulated bonded pipe systems for directly buried hot water networks - Surveillance systems.

EN15698-1:2009
District heating system - Preinsulated bonded twin pipe systems for directly buried hot water networks. Twin pipe assembly of steel service pipe, polyurethane thermal insulation (PUR) and outer casing of polyethylene (PE).

CHAMBERS
For chamber information and co-ordinates refer to Document P147 Thameway Woking (Project Green) - Chamber Schedule

Legend:

- DH FLOW
- DH RETURN
- DC FLOW
- DC RETURN
- Comms Route
- HV Route

REV	NOTE	DESCRIPTION	DATE	APPR.
13	AS-BUILT - ENETED FINAL COMMENTS		2021-02-10	C.H.
12	AS-BUILT - Chambers, Comms & HV Route Updated		2021-01-29	C.H.
11	AS-BUILT - DC Flow & Return Updated		2020-11-30	C.H.
10	AS-BUILT - Comms & HV Ducts Added		2020-11-12	C.H.
09	AS-BUILT		2020-06-18	S.B.
08	NEW HEIGHT		2020-05-25	S.B.
07	STATUS UPDATE		2020-05-17	S.B.
04	TERMINATION POINT		2020-04-06	S.B.

AS-BUILT

CLIENT

enetea
SERVICES LTD

FVB
Company Number 10114933
www.fvb.se/en

FVB District Energy UK Ltd
9 Grayfriars Road, Reading
RG1 1NU
United Kingdom

PROJECT NO	DRAWN BY	DESIGNED BY
200004	S.BORSI	S.BORSI
DATE	APPROVED BY	
2020-03-15	PETER RUSSETT	

DISTRICT HEATING
LAYOUT & PROFILES - PHASE 1 WORKS